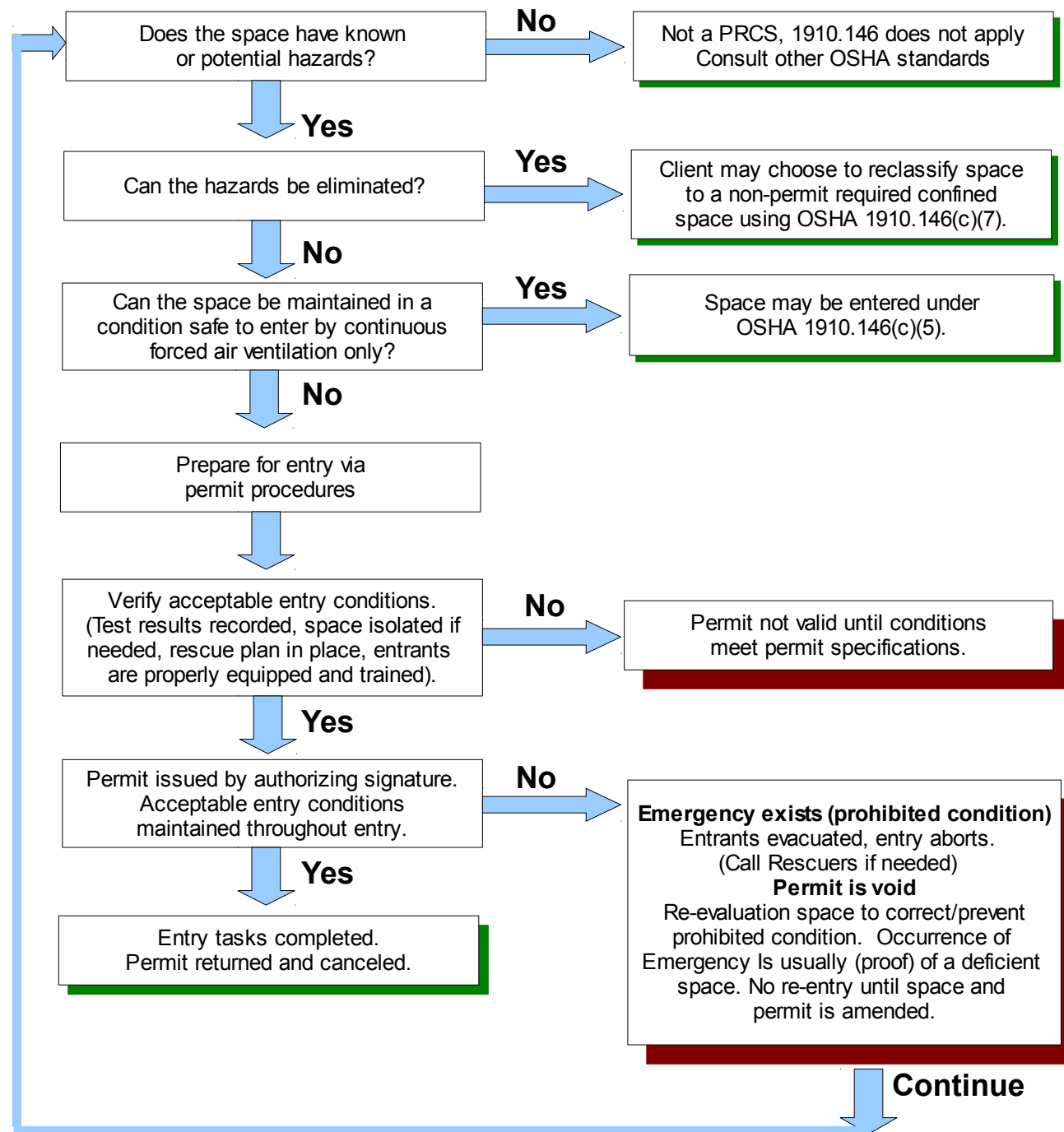


Permit-Required Confined Space Decision Flow Chart

The term "**Permit Required Confined Space**" refers to OSHA's definition of a "**Confined Space**" **and** contains health and safety hazards.



Whenever a new hazard is found, actual or perceived – All entrants must EXIT the permit space. Do Not re-enter the permit space until all hazards have been addressed. Any crew member is allow to issue a STOP WORK.

Prior to entry into any permit required confined space, crew members shall be trained to work in permit spaces.

Assigned Duties:

1. Authorized Entrant(s):

- ◆ Know the space hazards, including information on the means of exposure such as inhalation or dermal absorption, signs or symptoms and consequences of the exposure;
- ◆ Properly select, use and wear Personal Protective Equipment (PPE);
- ◆ Maintain communications with attendant(s) as necessary to enable them to monitor the entrant's status and alert the entrant to evacuate when necessary

2. Authorized Attendant(s):

- ◆ Remain outside the permit space during entry operations unless relieved by another authorized attendant;
- ◆ Perform non-entry rescues as required by procedures;
- ◆ Know existing and potential hazards, including information on the mode of exposure, signs or symptoms, consequences and physiological effects;
- ◆ Maintain communication with and keep an accurate account of those workers entering the permit space;
- ◆ Order evacuation of the permit space when:
 - ◆ A prohibited condition exists;
 - ◆ A worker shows signs of physiological effects of hazard exposure; An emergency outside the confined space exists; and The attendant cannot effectively and safely perform required duties.
- ◆ Summon rescue and other services during an emergency;
- ◆ Ensure that unauthorized people stay away from permit spaces or exit immediately if they have entered the permit space;
- ◆ Inform authorized entrants and the entry supervisor if any unauthorized person enters the permit space; and
- ◆ Perform no other duties that interfere with the attendant's primary duties.

3. Entry Supervisor :

- ◆ Know space hazards including information on the mode of exposure, signs or symptoms and consequences;
- ◆ Verify emergency plans and specified entry conditions such as permits, tests, procedures and equipment before allowing entry;
- ◆ Terminate entry and cancel permits when entry operations are completed or if a new condition exists;
- ◆ Verify that rescue services are available and that the means for summoning them are operable;
- ◆ Take appropriate measures to remove unauthorized entrants; and
- ◆ Ensure that entry operations remain consistent with the entry permit and that acceptable entry conditions are maintained.